

RPE Sanitary Sampling Valve 90°



The RPE sanitary sampling valves with 90° outlet are completely autoclavable, they allow for sampling at the center of the line, obtaining the desired representative sample. Inexpensive and easy to use, these sampling valves in AISI 316L can be installed on distribution loops or tanks, they are available with CLAMP, butt weld or gas threaded connections.

The inlet connection is available with flat face or with insertion tube.



ADVANTAGES:

- ✓ Can be sanitized in-line
- ✓ Autoclavable
- ✓ Easy to use and reliable
- ✓ High temperature and pressure resistant
- ✓ With removable dust protective cap
- ✓ Full material traceability
- ✓ Certified materials for Pharmaceutical use

APPLICATION:

Sanitary sampling valves suitable for installation on the tanks or process lines of Pharmaceutical, Food & Beverage, Cosmetics, Dairy and Fine Chemicals plants. These valves are the ideal solution to take a true representative sample of liquids.

| | |
|--|--|
| Size range | 1/2" - 3/4" - 1" - 1 1/2" - 2" - 2 1/2" - 3" - 4" |
| Stainless steel in contact parts Material | AISI 316L - 1.4404 |
| Plug Material | Modified PTFE - Silicone - FKM |
| O-ring Material | Silicone - FKM - EPDM |
| Internal surface finish | Average Ra ≤ 0.76µm - Inlet clamp surface Ra ≤ 0.38µm |
| Working pressure rating | Vacuum + 10 barg |
| Max working temperature | 150°C |
| Certifications | 3.1 material certificates (in contact) according to UNI EN 10204 FDA USP Class VI other certificates on request |

DATASHEETS



Last updates can be found on our website - www.aerreinox.it

In the interests of development of the product, we reserve the right to change the specifications without prior notice



INLET TYPE



Flat face



With deep tube $\varnothing 10 \times 1\text{mm}$
L.45mm

PROCESS CONNECTION



$\frac{1}{2}$ " - $\frac{3}{4}$ " Clamp ASME BPE
/BS 4825

1"-1" $\frac{1}{2}$ " Clamp ASME BPE
/BS 4825

2" Clamp ASME BPE/BS 4825

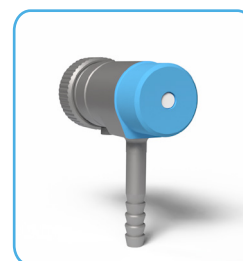
2" $\frac{1}{2}$ " Clamp ASME BPE/BS 4825

3" Clamp ASME BPE/BS 4825

4" Clamp ASME BPE/BS 4825



Butt Weld $\varnothing 19.05\text{mm}$



$\frac{3}{8}$ " Male Gas Thread - ISO228/1

$\frac{1}{2}$ " Male Gas Thread - ISO228/1

SAMPLING OUTLET CONNECTION



Hose barb $\varnothing 6.35 \times 1.24\text{mm}$



$\frac{1}{8}$ " Clamp ASME BPE/BS 4825



Butt Weld $\varnothing 6.35 \times 1.24\text{mm}$

DATASHEETS



Last updates can be found on our website - www.aerreinox.it
In the interests of development of the product, we reserve the right to change the specifications without prior notice



SEALS



| |
|---------------|
| Silicone |
| Modified PTFE |
| FKM |



| |
|----------|
| Silicone |
| EPDM |
| FKM |

OPTIONAL

- Electropolishing
- Deep tube special lenght
- Other Materials
- Other types of connections
- Customizable on request

DATASHEETS



Last updates can be found on our website - www.aerreinox.it
In the interests of development of the product, we reserve the right to change the specifications without prior notice